

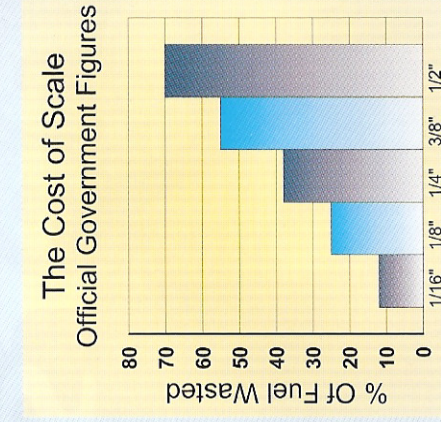


Lakeside

Water Softeners

Enjoy the luxury of
Lakeside Soft Water

More than half of the United Kingdom's homes suffer from the harsh effects of hard water!



Thickness Of Scale After Each Years
Approximate Build Up
(Average Hard Water Builds Up to 1/16"
Of Scale per Year)

Scale builds up in hot water systems at an alarming rate of 1/16" every year; eventually clogging up the whole system and ending up with costly replacements.

Scale forms as an unsightly white stain that you will recognise as something normally seen round your bath, sinks, taps, showers, etc..

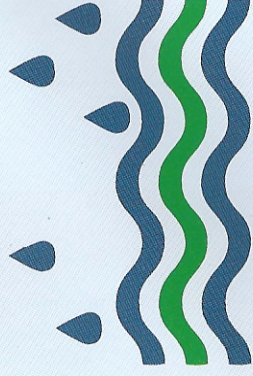
Scale also makes your hair and skin dry, brittle and difficult to manage. It reduces the life of many household appliances - clogging them so that they need to be replaced.

Lakeside Soft Water Benefits You!

A Lakeside Water Softener is a modest investment, it is easy to operate with low maintenance and running costs. Installation is usually simple and trouble free. Within two weeks you will feel the difference.

With time you will see scale stains start to dissolve leaving shiny surfaces. This effect will reduce your bills for hot water and can cut cleaning product costs by up to 50%.

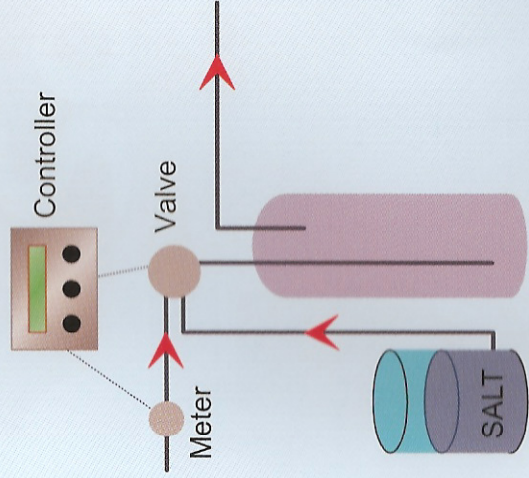
You will also find that you end up spending more time enjoying Lakeside soft water and less time cleaning. Not only will it help you to save money but it will also help you to enjoy it as you do the things you want and less of the things you had to when you had hard water.



Enjoy the luxury of Lakeside Soft Water

How Your Lakeside Water Softener Works

A Lakeside Water Softener basically consists of a pressure vessel filled with resin. Located on the top of the pressure vessel is the control valve. All of this is mounted in a cabinet. The water that you want to be softened is passed through the control valve and down into the vessel. As the water is passed across the resin bed, the calcium and magnesium attaches itself to the resin; so that all of the water leaving the unit is soft.



Schematic Diagram of a Water Softener

Periodically, depending upon how much water has been used, the resin needs to be regenerated. This is done by flushing a very small amount of salt water through the resin vessel. This is normally done at 2am whilst you sleep. Once this process has been completed the resin is refreshed and ready to begin again.

Installation

Installing a Water Softener is almost as easy as installing a Washing Machine or Dishwasher. Once the machine is installed a Lakeside Engineer will call to commission and demonstrate it to you. He will then top it up with salt from your free bag and then it is ready to service your home and family.

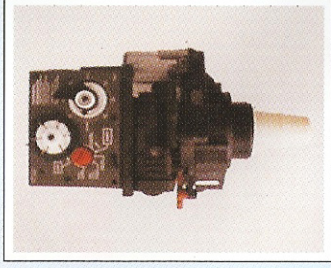
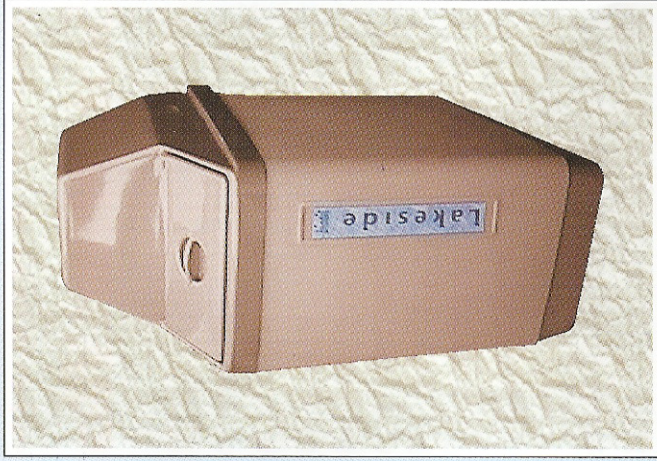
Maintenance

Maintaining your new Water Softener is easy. All you have to do is add salt once or twice a month. As part of preventative maintenance it is suggested that you have your Water Softener serviced once every two years; but this is only a suggestion and does not effect your warranty.

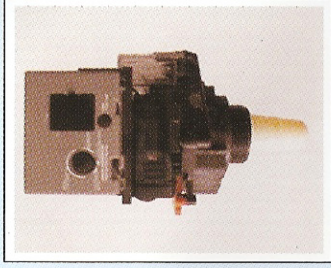
**Softness Guaranteed
with Lakeside**



Lakeside



Autotrol Timeclock



Autotrol Meter

CHOOSING THE RIGHT MODEL

The Simply Soft is a highly reliable Timeclock water softener that works on a preset regeneration schedule.

The Salt Saver is also highly reliable but the more efficient of the two models, only regenerating when absolutely necessary.

In the interests of new technology we reserve the right to alter the specifications without prior notice.

Specification	Simply Soft	Salt Saver
Controller	Timeclock	Metered
Size (HxWxD) mm	695x270x440	695x270x440
Connections (Inlet / Outlet)	3/4" Bsp	3/4" Bsp
Operating Conditions		
Min / Max Working Pressure	20 - 127 psi	20 - 127 psi
Power Supply	12 Volt 50Hz	12 Volt 50Hz
Performance		
Capacity @ 21° Clarke	560 Gallons	560 Gallons
Salt Used per Regen	5lbs	5lbs
Resin Capacity	14	14



LakesideWater
WATER TREATMENT & HYGIENE SPECIALISTS

Reg No. 369 1827

Elaine Knighton

Managing Director A.W.M. Soc
Mob. 07917 327357
Email elaine@lakesidewater.co.uk

WATER TREATMENT SPECIALISTS

The Water Warehouse, Unit 2, St Marys Road, Ramsey, Cambridgeshire PE26 2SW
Telephone (01487) 815914 - Facsimile (01487) 815070
WWW.LAKESIDEWATER.CO.UK



Another satisfied customer